

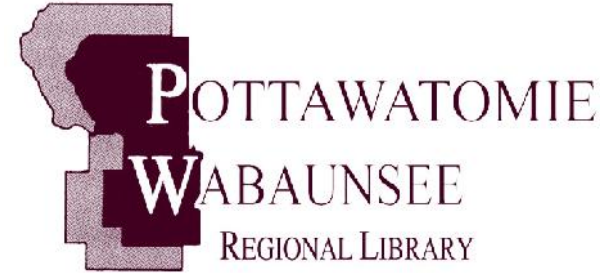
LOCATIONS AND CURRENT SERVICE HOURS

HEAD QUARTERS	306 N. 5th St. Marys, KS 66536 (785) 437-2778 illpowab@oct.net ; cremerj@oct.net	M, T, F Wednesday Thursday Saturday	8:30-5:00 8:30-6:00 8:30-7:00 9:00-1:00
			
BRANCHES	Alma Branch Library 115 W. 3rd, P.O. Box 420 Alma, KS 66401	M, T, F Wednesday	9:00-12:15 ; 12:45-5:00 9:00-12:15-12:45-7:00 powabalm@gmail.com
	Eskridge Branch Library 115 S. Main, P.O. Box 87 Eskridge, KS 66423 (785) 449-2296	M, T, W Friday Saturday	8:30-12:30 ; 1:00-5:00 9:00-12:30 ; 1:00-4:00 10:00-12:00 powabesk@gmail.com
	Onaga Branch Library 313 Leonard, P.O. Box 310 Onaga, KS 66521 (785) 889-4531	Monday Wednesday Tue, Friday	9:00-12:30 ; 1:00-7:00 9:00-12:30 ; 1:00-6:30 9:00-12:30 ; 1:00-5:00 powabona@gmail.com

MINI LIBRARIES:	Alta Vista Mini Library 310 Center, Alta Vista, KS (785) 499-5542 powabav@gmail.com Wednesday 10:00-11:30; 12-6:30	Harveyville Mini Library 128 W. Oak, Harveyville, KS (785) 589-2414 powabhv@gmail.com Wednesday: 11:30-12:30; 1:00-4:30 Saturday: 9:00-12:00
		
05/21/2013	Olsburg Mini Library 318 N. 2nd, Olsburg, KS (785) 468-3347 powabols@gmail.com Thursday: 10-12; 12:30-3:30; 5:30-7:30	Westmoreland Mini Library 315 Main, Westmoreland, KS (785) 457-2841 powabwst@gmail.com Monday: 10-1; 1:30-6:00

Mail is not received at Mini locations. All correspondence, both physical & electronic, should be addressed to the Headquarters Library at St. Marys.

2012 Annual Report



<http://www.pottwab.org>

POTTAWATOMIE WABAUNSEE REGIONAL LIBRARY

The Pottawatomie-Wabaunsee Regional Library began as a demonstration project conducted by the State Library of Kansas. The project ended on November 6, 1962, with the voters of Pottawatomie and Wabaunsee Counties approving the establishment of the Regional Library by a 2 to 1 margin. The Pottawatomie Wabaunsee Regional Library is today the only two-county public library in Kansas.

The St. Marys Branch Library became the headquarters for the Regional Library, and the Onaga Library was established as a Branch in 1962. The Alma Branch Library was added in 1963, and the Eskridge Branch was added in 1967.

PWRL originally operated a bookmobile that stopped at many of the rural communities in both counties. The Bookmobile service declined, and finally ceased operation in 1995. The Board determined that a new means to provide Library service to the rural areas was needed. As a result, three Mini Libraries were established as service outlets in Harveyville, Olsburg, and Westmoreland in 1981. A fourth Mini Library was opened at Alta Vista in 1996.

Mini Libraries are access points for Library service. Their purpose is to provide residents in more remote areas of the two counties with direct, but limited, Library service. Materials at Mini locations are continually rotated from PWRL's shared collection of more than 80,000 items, so that a fresh and balanced selection is always available at each location. Patrons can also make individual requests for items at any time.

PWRL strives to provide free and open access to information, and to deliver the best possible library services to the residents of Pottawatomie and Wabaunsee Counties. The Library continues to maintain libraries in the rural communities of Alma, Alta Vista, Eskridge, Harveyville, Olsburg, Onaga, St. Marys and Westmoreland toward this purpose.

CHARACTERISTICS OF LEGAL SERVICE AREA

The Pottawatomie Wabaunsee Regional Library is established under K.S.A. 12-1231 et seq. The Library is supported by a mill levy on the two counties, excluding Wamego and the part of Manhattan in Pottawatomie County. The division of the budget is based on population

Legal Service Area		
Pottawatomie County	820 square miles	
Wabaunsee County	792 square miles	
2012 Legal Service Population - From the KS Office of the Dir. of the Budget		
	Pottawatomie County (Within Library District)	17,336
	Wabaunsee County	7,026
	Total in PWRL Service Area	<u>24,362</u>
2012 Tangible Valuation - From County Clerks		
	Pottawatomie County (Within Library District)	\$384,834,644
	Wabaunsee County	\$ 72,721,540
	Total valuation for PWRL Service Area	<u>\$457,556,184</u>

SERVICES AVAILABLE

Books

Adult and children's books are available for checkout at all locations in regular & large print. Materials from any location may be easily requested by patrons at any other location.

Audio Books

Books on tape & cd, both fiction and non-fiction, are available at all locations.

Magazines and Newspapers

Approximately 110 different subscriptions are received.

Videos

The library has a small collection of current dvd's available for check-out.

Reference.

Qualified staff is ready to help. If the answer is not readily available Library staff will assist patrons with research or refer them to expert resources to find an answer.

Interlibrary Loan

PWRL can borrow library materials we don't own from other libraries through a statewide borrowing network. Items are quickly delivered for patron use by a statewide courier service.

Story Time

A story time for toddlers and pre-schoolers is held at each Branch location every Tuesday morning from September through April.

Summer Reading Program

During the summer months, various special programs for younger readers are held to help encourage and sustain lifelong reading habits.

Newspaper On Microfilm / Local History

PWRL owns an original or microfilm copy of every newspaper printed within the Library's service area. Patrons at branch locations may use our microfilm equipment to view, scan, email or print articles. Birth, death, and marriage indexes have been compiled for many of the newspapers to aid in the search.

Copier & Fax Machine

Each PWRL location has a copier and a fax machine for the public's use.

Computer, Internet, & Wireless Access

Each PWRL location has computers with Internet access available for the public's use. All locations offer wireless Internet access during business hours for patrons who have their own equipment and want to use PWRL's high speed Internet connection.

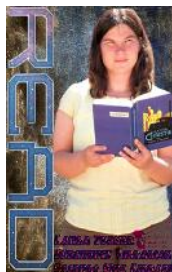
NCKL - North Central Kansas Library System

PWRL contracts with NCKL to provide residents additional services. NCKL provides rotating and talking books. Training for library staff is also offered. PT & WB County residents, under PWRL's reciprocal agreement, may get a card and use the Manhattan Public Library, or any other NCKL member library.

Alta Vista Substitute (+)
Sheryl Crooks



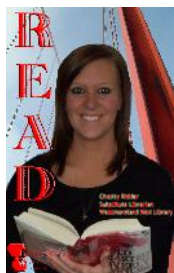
Olsburg Substitute
Laura Turner



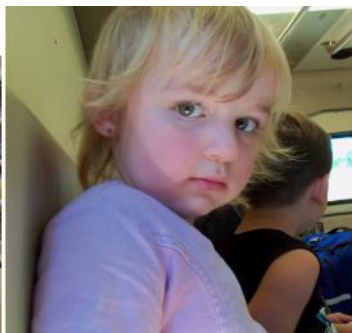
Olsburg Substitute (+)
Becky Avery



Westmoreland Substitute
Chasity Ridder



(+) Indicates staff has responsibility for working or completing tasks at more than one PWRL location.



BOARD MEMBERS AS OF DECEMBER 31, 2012

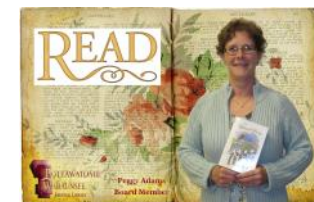
Position 1	Deb McClain-Williams Olsburg, 66520	May 1, 2010 - April 30, 2014 Vice-Chairman
Position 2	Donna Tranter Harveyville, 66431	May 1, 2010 - April 30, 2014 Secretary
Position 3	Ruth Messer Alma, 66401	May 1, 2008 - April 30, 2012 May 1, 2012 - April 30, 2016 Chairman
Position 4	Linda Tessendorf Onaga, 66521	May 1, 2011 - April 30, 2015
Position 5	Peggy Adams Maple Hill, 66507	May 1, 2009 - April 30, 2013 Treasurer
Position 6	Nancy Perry St. Marys 66536	May 1, 2012 - April 30, 2016

2012 - EX-OFFICIO MEMBERS

Rodney Allen, Chairman Wabaunsee County Commission Alma, 66401	Pat Weixelman, Chairman Pottawatomie County Commission Westmoreland, 66549
--	--

The Pottawatomie Wabaunsee Regional Library Board of Trustees is composed of eight members. The Pottawatomie and Wabaunsee County Commissions each appoint three members to serve on the Library Board. The County Commission Chairman from each county also serves as an ex-officio voting member of the Board.

Library Board members can serve a maximum of two consecutive, four year, terms. The regular monthly meeting of the Library Board is generally held on the last Wednesday of each month at 5:30 at the St. Marys Library, unless otherwise ordered by the Board.



FINANCIAL REPORT

Revenues 2012		
PT Co. Ad Valorem Taxes	\$ 370,221.00	
WB Co. Ad Valorem Taxes	\$ 108,626.00	
Grants & State Aid	\$ 10,280.00	
Donations and Memorials	\$ 2,710.00	
CIF Income	\$ 27,101.00	
SMSB CD Interest (van replacement)	\$ 32.00	
Miscellaneous Revenues	<u>\$ 7,061.00</u>	
Total Revenue		<u>\$ 526,031.00</u>
Expenditures 2012		
Personnel (Salaries & Benefits)	\$ 311,656.00	
Library Materials (\$20,000 budgeted, add'l expenditure from General Fund, Capital Improvement Fund, donations, State Aid and misc. rev.)	\$ 65,253.00	
Operations (Rent, utilities, supplies, equip., etc.)	<u>\$ 146,496.00</u>	
Total Expenditures		<u>\$ 523,405.00</u>

Alma Substitute
Carole Moege



Alma Substitute (+)
Debra Jo Thierer



Alma Substitute (+)
Marilyn Hund



Eskridge Branch Librarian
Jan Brown



Eskridge Assistant (+)
Judy Morton



Eskridge Substitute (+)
Sharon Durkes



Onaga Branch Librarian
(+) **Ivy Rash**



Onaga Assistant (+)
Emma Schreiber



Mini Librarian-Harveyville
(+) **Judy Morton**



Harveyville Substitute
Sheila McKenzie



Mini Librarian (+)
(Alta Vista, Olsburg,
Westy) **Elizabeth Feiden**



Alta Vista Substitute
Linda Shoults



Director (+)
Judith Cremer



Assistant Director (+)
Open

Library Staff



Secretary/Bookkeeper (+)
Julie Homan



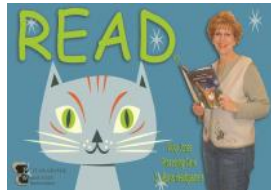
Processing Consultant (+)
Deborah Eichen



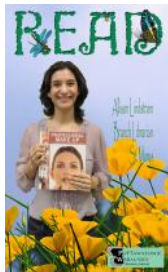
Collection Development (+)
Theresa Heath



Processing Clerk (+)
Vicky Jones



St. Marys Br. Librarian (+)
Allison Lindstrom



St. Marys Assistant
Bernadette Jekan



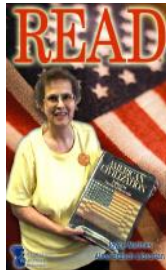
St. Marys Assistant
Belinda Peters



St. Marys Substitute
Sally Sharp



Alma Branch Librarian,
Iris Joyce Mathies



Alma Assistant,
Paula Moege



POTTAWATOMIE WABAUNSEE REGIONAL LIBRARY (EIGHT LOCATIONS IN POTTAWATOMIE & WABAUNSEE COUNTIES)

\$2,876,846.00

Pay to the
ORDER of **Pottawatomie Wabaunsee Regional Library Patrons**

Two million eight hundred seventy six thousand eight hundred forty six and no/100 — **DOLLARS**



In 2012 PWRL patrons used... 31,101 adult books with a value of \$ 777,525 if purchased by consumers
 ...40,689 young adult & children's books with a value of \$1,017,225 if purchased by consumers
 ...2,351 audio books with a value of \$ 58,775 if purchased by consumers
 ...3,914 interlibrary loan items with a value of \$ 97,850 if purchased by consumers
 ...1,382 periodicals with an average value of \$ 6,910 if purchased by consumers
 ...13,543 hours of computer time with an average value of \$ 162,516 if purchased by consumers
 Staff handled...19,197 special requests for materials with a value of \$ 479,925 if purchased by consumers
 Patrons Asked..27,612 reference questions with an average value of \$276,120 if purchased by consumers
 For: Value Check - for Library Materials & Services - 2012 April 11, Director

Library Expenditures in 2012 = \$523,405
 Value of Materials & Services to Community = \$2,876,846

Calculations based on the following Consumer Cost Values:
 Borrowed Materials (Books, Audios, Requests, ILL) = \$25
 Magazines Borrowed = \$5 ; Computer Time Used = \$12
 Reference Questions Asked = \$10

PWRL LIBRARY MATERIALS



	2007	2011	2012
Adult Books	48,387	34,272	31,332
Large Print	6,725	9,568	9,223
Young Adult Books	0	1,396	1,917
Children's Books	44,430	29,151	23,014
Rotating Books (NCKL)	5,820	5,840	5,917
Audio Books	2,740	3,290	3,055
Videos	236	462	890
Newspaper Subscriptions	24	21	22
Magazine Issues	4,704	6,894	7,364
Microfilm	443	489	495
Music CD's	0	507	509
Total Library Materials	113,509	91,890	83,738

OTHER STATISTICS - 2012

	2007	2011	2012
Total Registered Borrows (Patron re-registration)	6,313	3,827	4,475
Individual Public Computer Sessions	9,399	15,496	13,543
Reference Questions Answered	15,756	18,782	27,612
Patron Requests Handled	3,955	10,792	14,539
Patron Reserves filled by Staff	1,622	5,396	4,658
Interlibrary Loan Materials Loaned	836	1,195	1,588
Interlibrary Loan Materials Borrowed	786	1,644	2,326

TOTAL PATRON VISITS IN 2012

Location	Total Hours	Patrons 2007	Patrons 2011	Patrons 2012
Alma	1,664	8,684	9,318	11,045
Eskridge	1,690	7,280	4,992	6,074
Onaga	1,742	7,072	7,093	5,252
St. Marys	2,574	21,892	25,865	28,194
Alta Vista	416	676	915	1,030
Harveyville	390	1,768	468	780
Olsburg	364	1,196	946	853
Westmoreland	390	780	468	603
TOTAL	9,230	49,348	50,065	53,831

TOTAL NUMBER OF ITEMS BORROWED

	2007	2011	2012
Adult Books	31,028	29,939	31,101
Mail-A-Book	3,432	0	0
Children's Books	33,098	35,605	36,291
Young Adult Books	0	3,175	4,398
Audio Books	2,081	2,038	2,351
Periodicals	2,241	1,276	1,382
Videos	151	989	3,730
Music CD's	0	279	269
Total Borrowed	72,031	73,301	79,522

LIBRARY PROGRAMS

	2007	2011	2012
Children Attending Library Programs	8,251	6,577	8,023
Number of Special Children Programs	244	289	335
Children Participating in the annual eight week Summer Reading Program	421 (6 wks)	454	579
Number of Books Read during SRP	5,413	6,122	10,786
Number of Special Adult Programs	11	21	94
Adults Attending Library Programs	166	404	671
Number of Special Young Adult Programs	0	8	98
Young Adults Attending Library Programs	0	337	969

